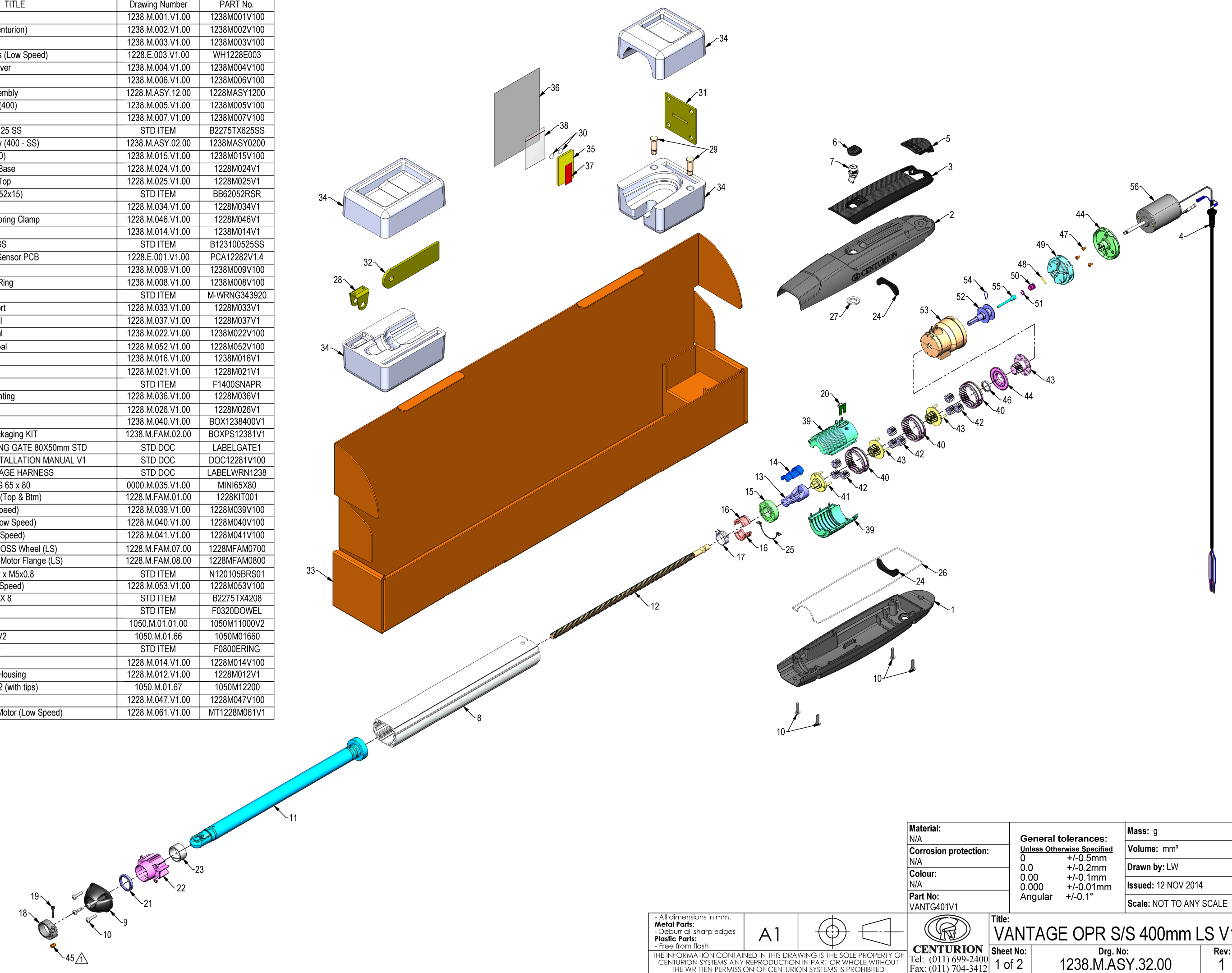


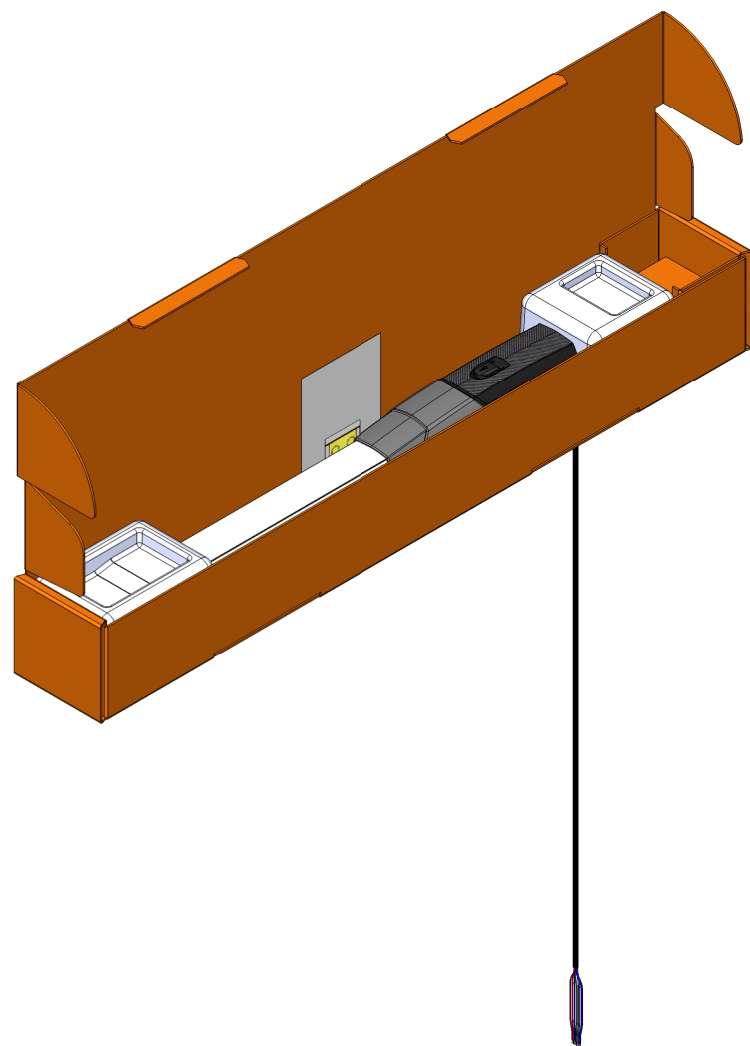
ITEM No.	QTY	TITLE	Drawing Number	PART No.
1	1	Vantage Bottom Casting	1238.M.001.V1.00	1238M001V100
2	1	Vantage Top Casting (Centurion)	1238.M.002.V1.00	1238M002V100
3	1	Vantage Badge	1238.M.003.V1.00	1238M003V100
4	1	Vert-X / Vantage Harness (Low Speed)	1228.E.003.V1.00	WH1228E003
5	1	Vantage Hinged Rear Cover	1238.M.004.V1.00	1238M004V100
6	1	Vantage Camlock Cover	1238.M.006.V1.00	1238M006V100
7	1	Vert-X WR Camlock Assembly	1228.M.ASY.12.00	1228MASY1200
8	1	Vantage Body Extrusion (400)	1238.M.005.V1.00	1238M005V100
9	1	Vantage Outer Tube End	1238.M.007.V1.00	1238M007V100
10	8	Screw Torx Taptite M6 X 25 SS	STD ITEM	B2275TX625SS
11	1	Vantage Piston Assembly (400 - SS)	1238.M.ASY.02.00	1238MASY0200
12	1	Vantage Worm Shaft (400)	1238.M.015.V1.00	1238M015V100
13	1	Vert-X Worm Coupling - Base	1228.M.024.V1.00	1228M024V1
14	1	Vert-X Worm Coupling - Top	1228.M.025.V1.00	1228M025V1
15	1	Bearing 6205-2RS1 (25x52x15)	STD ITEM	BB62052RSR
16	2	Vert-X Bearing Retainer	1228.M.034.V1.00	1228M034V1
17	1	Vert-X Worm Coupling Spring Clamp	1228.M.046.V1.00	1228M046V1
18	1	Vantage Origin Body	1238.M.014.V1.00	1238M014V1
19	1	Hex cap screw M5 x 25 SS	STD ITEM	B123100525SS
20	1	Vert-X / Vantage DOSS Sensor PCB	1228.E.001.V1.00	PCA12282V1.4
21	1	Vantage Piston Scraper	1238.M.009.V1.00	1238M009V100
22	1	Vantage Piston Support Ring	1238.M.008.V1.00	1238M008V100
23	1	Wear Ring	STD ITEM	M-WRNG343920
24	2	Vert-X Rear Motor Support	1228.M.033.V1.00	1228M033V1
25	1	Vert-X Front Bearing Seal	1228.M.037.V1.00	1228M037V1
26	1	Vantage Rear Cavity Seal	1238.M.022.V1.00	1238M022V100
27	1	Vert-X Camlock Foam Seal	1228.M.052.V1.00	1228M052V100
28	1	Vantage Gate Bracket	1238.M.016.V1.00	1238M016V1
29	2	Vert-X Gate Bracket Pin	1228.M.021.V1.00	1228M021V1
30	2	SNAP-RING 14mm	STD ITEM	F1400SNAPR
31	1	Vert-X Wall Bracket Mounting	1228.M.036.V1.00	1228M036V1
32	1	Vert-X Wall Bracket	1228.M.026.V1.00	1228M026V1
33	1	Vantage Packaging Box	1238.M.040.V1.00	BOX1238400V1
34	1	Vantage Polystyrene Packaging KIT	1238.M.FAM.02.00	BOXPS12381V1
35	2	LABEL WARNING MOVING GATE 80X50mm STD	STD DOC	LABELGATE1
36	1	VERT-X / VANTAGE INSTALLATION MANUAL V1	STD DOC	DOC12281V100
37	1	LABEL WARNING VANTAGE HARNESS	STD DOC	LABELWRN1238
38	1	MINI GRIP PLASTIC BAG 65 x 80	0000.M.035.V1.00	MINI65X80
39	1	Vert-X Gearbox Housing (Top & Btm)	1228.M.FAM.01.00	1228KIT001
40	3	Vert-X Ring Gear (Low Speed)	1228.M.039.V1.00	1228M039V100
41	1	Vert-X Output Coupler (Low Speed)	1228.M.040.V1.00	1228M040V100
42	9	Vert-X Planet Gear (Low Speed)	1228.M.041.V1.00	1228M041V100
43	1	Vert-X Planet Carrier & DOSS Wheel (LS)	1228.M.FAM.07.00	1228MFAM0700
44	1	Vert-X Gearbox Shield & Motor Flange (LS)	1228.M.FAM.08.00	1228MFAM0800
45	1	Barrel Nut (Brass) Ø8x12 x M5x0.8	STD ITEM	N120105BRS01
46	1	Vert-X Fling Shield (Low Speed)	1228.M.053.V1.00	1228M053V100
47	3	Screw Torx Taptite M4.2 X 8	STD ITEM	B2275TX4208
48	1	Dia 3 x 20 Dowel pin	STD ITEM	F0320DOWEL
49	1	Vector Brake Assy V2	1050.M.01.01.00	1050M11000V2
50	1	Release Detent (E-ring) V2	1050.M.01.66	1050M01660
51	1	E-Ring 6mm (SS GR304)	STD ITEM	F0800ERING
52	1	Vert-X Release Drive	1228.M.014.V1.00	1228M014V100
53	1	Vert-X Release & Brake Housing	1228.M.012.V1.00	1228M012V1
54	1	Vector Release Spring V2 (with tips)	1050.M.01.67	1050M12200
55	1	Vert-X Spacer Pin	1228.M.047.V1.00	1228M047V100
56	1	Vert-X / Vantage Linear Motor (Low Speed)	1228.M.061.V1.00	MT1228M061V1



Material: N/A	General tolerances: Unless Otherwise Specified	Mass: g
Corrosion protection: N/A	0 +/-0.5mm 0.0 +/-0.2mm 0.00 +/-0.1mm 0.000 +/-0.01mm Angular +/-0.1°	Volume: mm³
Colour: N/A		Drawn by: LW
Part No: VANTG401V1		Issued: 12 NOV 2014
		Scale: NOT TO ANY SCALE

- All dimensions in mm. Metal Parts: - Deburr all sharp edges Plastic Parts: - Free from flash	A1		Title: VANTAGE OPR S/S 400mm LS V1
THE INFORMATION CONTAINED IN THIS DRAWING IS THE SOLE PROPERTY OF CENTURION SYSTEMS ANY REPRODUCTION IN PART OR WHOLE WITHOUT THE WRITTEN PERMISSION OF CENTURION SYSTEMS IS PROHIBITED		Sheet No: 1 of 2	Rev: 1
		Drg. No.: 1238.M.ASY.32.00	
		Tel: (011) 699-2400 Fax: (011) 704-3412	

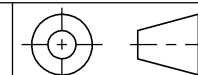
REV	DATE	BY	SHEET / ZONE	DESCRIPTION	ECR No
1	2014-12-02	LW	1 / L3	BARREL NUT CHANGED TO BRASS N120105BRS01 (FORMERLY STAINLESS STEEL N120105BA2SS)	ECP.00548



Material: N/A	General tolerances: <u>Unless Otherwise Specified</u>	Mass: g
Corrosion protection: N/A	0 +/- 0.5mm	Volume: mm³
Colour: N/A	0.0 +/- 0.2mm	Drawn by: LW
Part No: VANTG401V1	0.00 +/- 0.1mm	Issued: 12 NOV 2014
	0.000 +/- 0.01mm	Scale: ----
	Angular +/- 0.1°	

- All dimensions in mm.
Steel Parts
- Deburr all sharp edges
Plastic Parts
- Free from flash

A3



Title:
VANTAGE OPR S/S 400mm LS V1

CENTURION
Tel: (011) 699-2400
Fax: (011) 704-3412

Sheet No:
2 of 2

Drg. No:
1238.M.ASY.32.00

Rev:
1

THE INFORMATION CONTAINED IN THIS DRAWING IS THE SOLE PROPERTY OF CENTURION SYSTEMS ANY REPRODUCTION IN PART OR WHOLE WITHOUT THE WRITTEN PERMISSION OF CENTURION SYSTEMS IS PROHIBITED